

Winlink V/UHF Peer to Peer (P2P) Messaging Reference Sheet -

A peer-to-peer connection is a connection between 2 Winlink clients. This mode requires the called station to be listening at the same time and on the same frequency as the calling station. Both stations need to be in the same Peer-to-peer mode. Either station once connected can make a file transfer.

1. From the main Winlink Express window select **Packet P2P**, **Vara FM P2P** or your preferred P2P mode from the Session drop down.

There are a number of modes that P2P can be used with. Steps are the same for other P2P modes.

2. Open a new message and then from the *Send as* dropdown select **Peer-to-Peer Message**.

3. Create your message with or without a form.

4. Enter the call of the station(s) you want to send the P2P message to in the *To:*. After you finish the message click on **Post to Outbox**.

Note: The *Send as* dropdown reverts to Winlink Message after a **Post to Outbox**.

5. In the session window check that the 'selected' **Peer-to-Peer Session** is shown at the top of the window. Enter the call sign(s) of the station you want to connect to and set it for Direct.

Click **Start** to send you message.

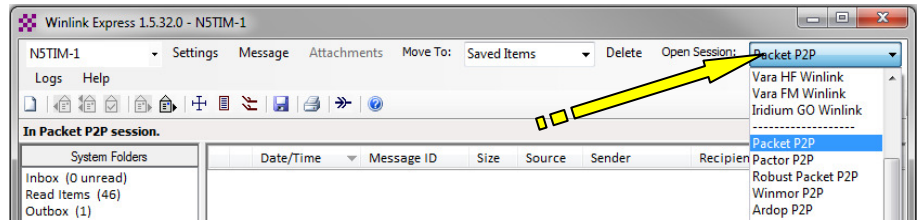
Note: Tactical calls are allowed after Winlink Express version 1.7.5.0.

Digipeating

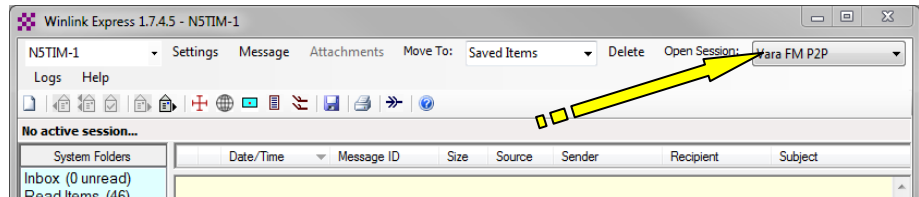
6. A Digi may be used to connect P2P stations that are not able to connect directly. Select **Digipeater** for Connection Type and enter the Digi call sign in the *via* box. Select **Start** to send message. Digi must be on the same frequency as P2P exchange.

Note: To use a Vara FM mode digipeater, the user must have a Vara license.

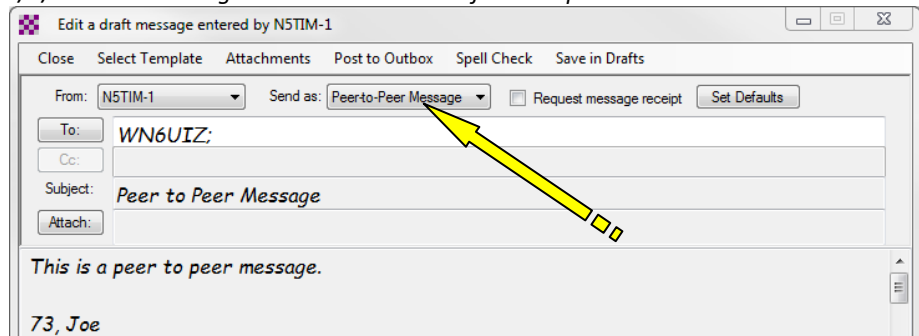
1a → Packet P2P session selected



1b → Vara FM P2P session selected

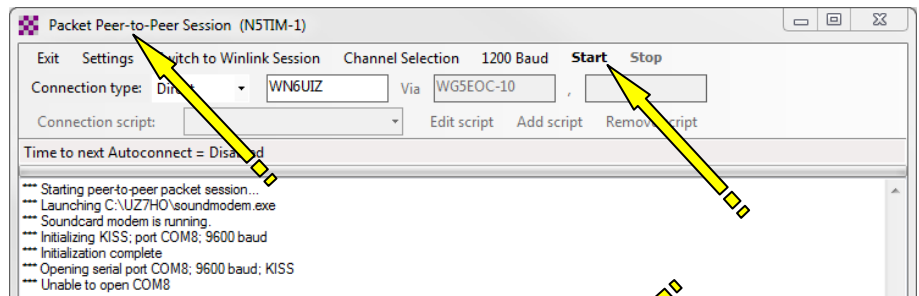


2/3/4 → P2P Message selected as Send as from dropdown

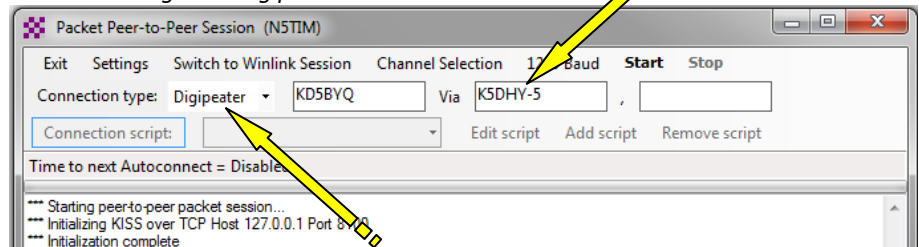


Note: You can have multiple Calls in the *To:* of a P2P. A separate message is created for each call in the out box each with the same message.

5 → Start the P2P Session



6 → Connecting via a digipeater



Digipeating not available for HF P2P modes